



IBSA Euro Challenge Cup in Blind Football Prague 2014



Dear friends,

It is our pleasure to contact you once again with further information on our blind football development tournament in Prague in July. While retaining the original aims and format, the tournament has been renamed the *IBSA Euro Challenge Cup in Blind Football Prague 2014*, and the short name for the event is the *IBSA Euro Challenge Cup 2014*. The tournament is part of the IBSA Blind Football Development Project Europe for the period 2012-2017, which we are running thanks to financial support from UEFA.

We are delighted to report that the six countries we invited to take part in the event have all confirmed their participation, so the line-up for the event is Belgium, Czech Republic, Hungary, Moldova, Poland and Romania.

The event is organised in partnership with the Czech Blind Sportsmen Association and Blind Sports Club Prague, and with support from the Football Association of the Czech Republic and Prague Březiněves Municipal District.

Below you will find detailed information about the event which we trust will assist you in your preparations. We are also circulating an entry form which we would ask you to complete and return to football.eurdev@ibasport.org, with copy to football.chair@ibasport.org, by Friday May 16th.

We remind you that your accommodation, meals and local transport will be covered by the IBSA Blind Football Development Project Europe. You are asked to pay only for travel to and from Prague and any sundry expenses you may incur during your stay.

Should you have any further questions regarding the event please contact David Stirton, Project Co-ordinator for the IBSA Blind Football Development Project Europe, at football.eurdev@ibasport.org, or Ulrich Pfisterer, Chair of the IBSA Football Committee, at football.chair@ibasport.org.

We look forward to receiving your entry forms by the date indicated above, and to welcoming you to the *IBSA Euro Challenge Cup 2014*.

IBSA Euro Challenge Cup in Blind Football Prague 2014



IBSA Euro Challenge Cup 2014

Concept: an international development tournament in blind football involving six emerging European countries in the sport – Czech Republic, Belgium, Romania, Hungary, Poland and Moldova.

Competition rules: the event will be conducted according to the IBSA B1 Football Rulebook - <http://www.ibsasport.org/sports/files/289-Rules-IBSA-Football-Rulebook-2014-2017.pdf>.

Venue: the IBSA Euro Challenge Cup 2014 will be held in Prague Březiněves, a municipal district which is located 13km from Prague city centre and 25km from Prague Airport.

Google maps: <https://www.google.es/maps/@50.1652685,14.488907,5913m/data=!3m1!1e3>

Web site: <http://www.brezineves.cz/>

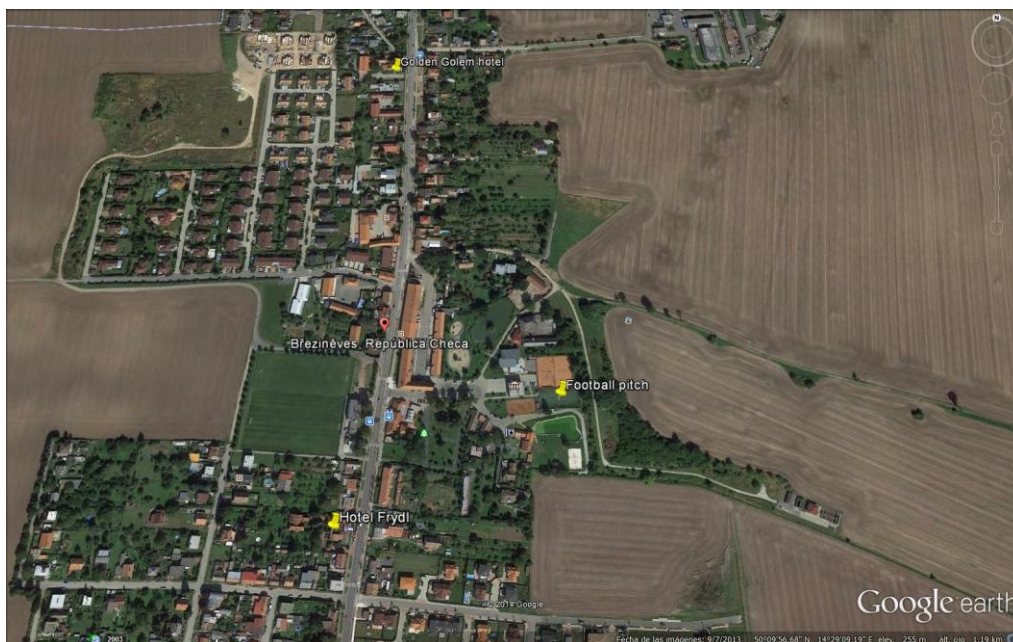
All games will be played on the artificial grass five-a-side football pitch at the municipal sports centre.



IBSA Euro Challenge Cup in Blind Football Prague 2014



Accommodation: the main hotel for the event is the Hotel Frydl - <http://www.frydl.cz/en/>. If necessary, additional accommodation will be provided at the Golden Golem Hotel - <http://www.hotel-golem.cz/en/>.



Both hotels are within walking distance of the pitch (Hotel Frydl – 5 minutes, Golden Golem Hotel – 15 minutes).

Meals: meals will be provided at the Hotel Frydl. Lunch will be served from 12:00 until 15:00 and dinner will be available from 19:00 to 22:00. We shall ensure a varied menu, including pasta dishes, meat-based dishes and vegetarian options.

Meals will be provided from lunch on Wednesday July 9th until lunch on Sunday July 13th.

Internet: free wireless internet connection is available to all guests and visitors at the Hotel Frydl.



IBSA Euro Challenge Cup in Blind Football Prague 2014



Competition format: two groups of three teams in a round-robin group first stage. The winners and second-place teams shall qualify for the semi-finals. The third-placed teams shall play each other for 5th-6th place. The winners of the semi-finals shall qualify for the final, and the losers shall play off for 3rd-4th place. In total eleven games will be played over three match days.

| Group A | Group B |
|-----------------------------------------------------------------|------------------|
| Team 1 | Team 4 |
| Team 2 | Team 5 |
| Team 3 | Team 6 |
| Game 1 - 1 vs. 2 | Game 2 - 4 vs. 5 |
| Game 3 - 1 vs. 3 | Game 4 - 4 vs. 6 |
| Game 5 - 2 vs. 3 | Game 6 - 5 vs. 6 |
| Game 7 - semi-final 1: winner group A vs. runner-up group B | |
| Game 8 - semi-final 2: runner-up group A vs. winner group B | |
| Game 9 - 5th-6th place play-off: 3rd group A vs. third group B | |
| Game 10 - 3rd-4th place play-off: loser game 7 vs. loser game 8 | |
| Game 11 - final: winner game 7 vs. winner game 8 | |

Schedule:

Wednesday July 9th (morning/afternoon) – arrival all teams

Thursday July 10th – Games 1-4

Friday July 11th – Games 5-8

Saturday July 12th – Games 9-11

Sunday July 13th (morning/afternoon) – departure all teams

On Thursday July 10th and Friday July 11th games will be played at 09:00, 11:00, 16:00 and 18:00. On Saturday July 12th games will be played at 11:00, 16:00 and 18:00.

IBSA Euro Challenge Cup in Blind Football Prague 2014



Draw: the draw for the event shall be held in the weeks running up to the competition.

Occlusion eyeshades/masks: the IBSA Football Committee is currently testing a range of dark eyeshades (similar to those worn in Goalball) with a view to possible rule changes in the future. The IBSA Euro Challenge Cup 2014 is part of this testing project and all players will be obliged to wear shades from Goalfix Sports during play. IBSA shall provide all teams with shades for use during the event. The shades remain the property of IBSA and are to be returned at the end of the event. Teams may bring their own masks if they wish.



Competition apparel: we encourage all teams to wear their national football team strips during the competition if possible.

National delegations: IBSA shall cover accommodation, meals and local transport for a maximum of ten people during the competition. Your national delegation should include six outfield players, one goalkeeper, one coach, one guide and one referee. You may choose to send a larger delegation including more support staff, in which case you shall be responsible for covering the extra expenses. The maximum number of players you are allowed to enter in the tournament is seven: six outfield players and one goalkeeper.

With a view to further developing and extending the pool of international B1 football referees in Europe, we are asking you to include a referee in your delegation. This referee shall form part of the team of officials for the tournament which will operate under the supervision of Elias Mastoras, Refereeing Co-ordinator on the IBSA Football Committee.



IBSA Euro Challenge Cup in Blind Football Prague 2014



Competition logo and banner: a logo and banner have been specifically designed for the IBSA Euro Challenge Cup 2014. Please feel free to use these resources to promote the event among your stakeholders and partners and on your social media.



IBSA Euro Challenge Cup in Blind Football Prague 2014



Players: both male and female players may play at the IBSA Euro Challenge Cup 2014.

Technical meeting: a pre-competition technical meeting shall be held on Wednesday July 9th at 19:00 at the Hotel Frydl. Each participating country is invited to send two delegates to this meeting.

Further technical meetings shall be arranged during the tournament as and when necessary.

Insurance: we encourage all delegations to take out medical insurance for the duration of the event, or to ensure they are covered by any insurance policy held by their organisations.